



BROWN

Palm-left B moves down cheek at side of mouth. (see TAN)



BEAR

Swing crossed wrists of palm-in claw hands to the right, still crossed.



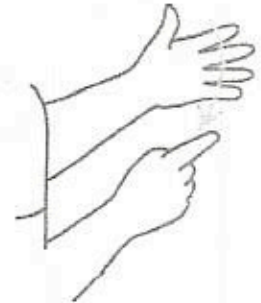
BROWN

Palm-left B moves down cheek at side of mouth. (see TAN)



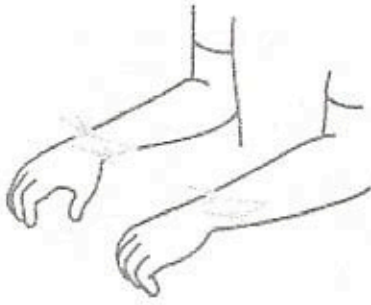
BEAR

Swing crossed wrists of palm-in claw hands to the right, still crossed.



WHAT

Index finger/tip of right hand brushes down across left fingers.



DO

Palm-down C-hands move side-to-side left to right.



YOU

Index points at person addressed.



SEE

Palm-in V from eye moves outward.



I

Palm-left I-hand on chest.



SEE

Palm-in V from eye moves outward.



A

Palm-out A moves slightly right.



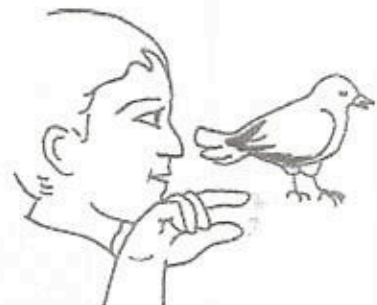
1



2

RED

Palm-in, index finger touches lip, brushes down and closes. (see PINK)



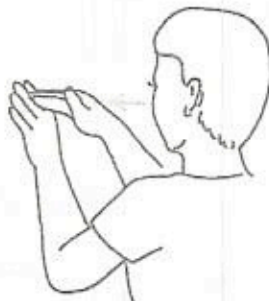
BIRD

Close index finger on thumb twice, hand at chin.



LOOK

Thumb of L at eye; move forward. (see SEE)



AT

Right fingertips approach and touch back of vertical left fingers.



ME

Index points to and touches chest.



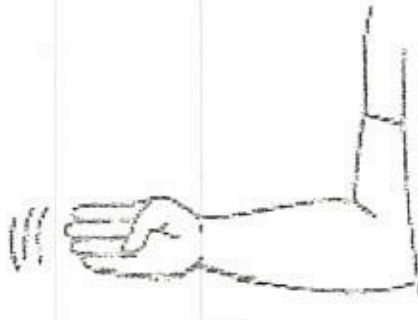
YELLOW

Palm-left Y shakes. (see BLUE)



DUCK

At chin, index and middle fingers close on thumb to form a duck's beak. (see BIRD)



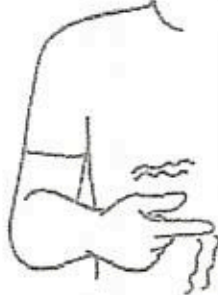
BLUE

Palm-left B shakes from wrist.



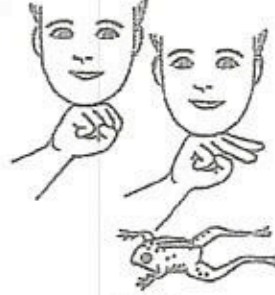
HORSE

Thumb on temple, flap H-fingers.



GREEN

Palm-left G shakes. (see BLUE)



FROG

Back of right S under chin; two fingers stick out; repeat.



PURPLE

Right P shakes from wrist. (see BLUE)



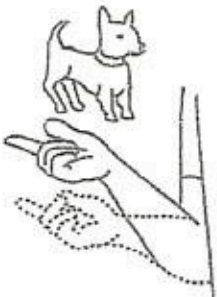
CAT

S-hand drawn out whiskers; repeat.



WHITE

S-hand on chest crosses outward, ending in a flat-O hand.



DOG

Palm-up fingers of D-hand snap several times. (to call a dog). (see PUPPY)



BLACK

Index finger moves across forehead to right.



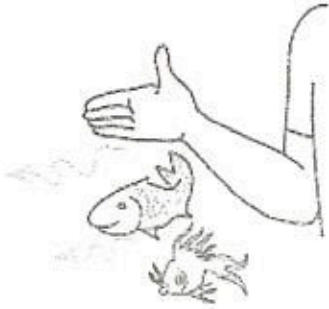
SHEEP

Palm-up V clips wool off left arm.



GOLD

G at ear shakes downward to right. (see CALIFORNIA)



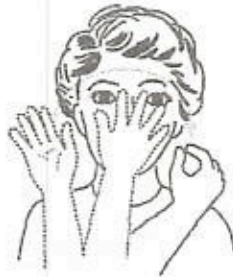
FISH

Palm-left flat hand flutters forward like fish swimming.



MOTHER

Thumb of palm-left 5-hand taps jaw near chin. (see MCM)



BEAUTY

BEAUTIFUL

Circle face with 5-hand closing to palm-in flat-O. (see FACE)



-FUL, FUL-

Palm-down hand brushes inward across top of left horizontal S.



CHILDREN

Palm-down hand bounces to side, waist high.



Pp
POLAR



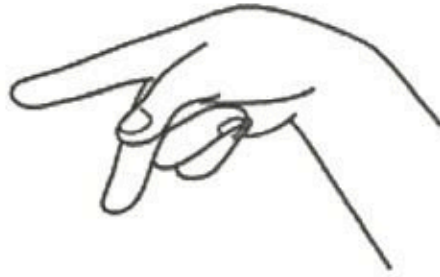
BEAR

Swing crossed wrists of palm-in claw hands to the right, still crossed.



BEAR

Swing crossed wrists of palm-in claw hands to the right, still crossed.



Pp
POLAR



BEAR

Swing crossed wrists of palm-in claw hands to the right, still crossed.



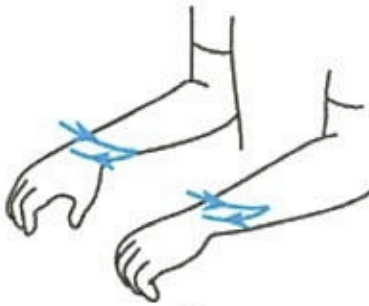
BEAR

Swing crossed wrists of palm-in claw hands to the right, still crossed.



WHAT

Index fingertip of right hand brushes down across left fingers.



DO

Palm-down C-hands move side-to-side left to right.



YOU

Index points at person addressed.



HEAR

H-hand rises to ear. (see SOUND)



I

Palm-left I-hand on chest.



HEAR

H-hand rises to ear. (see SOUND)



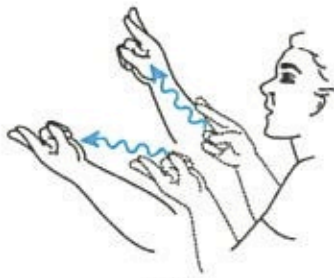
A

Palm-out A moves slightly right.



LION

Claw hand combs backward once with a shaking motion over mane.



ROAR
ROARING

R's face each other, right above left at chin; move outward, separating vertically with wavy motion.



-ING

Palm-in, I-hand twists in slight downward arc to right, ending palm-out.



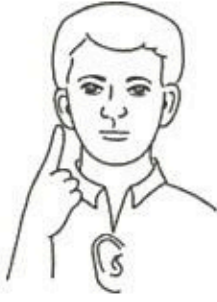
IN

Fingertips of right flat-O enter left horizontal O.



MY

Palm of flat hand on chest.



EAR

Right index points to ear.



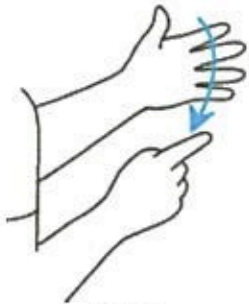
LION

Claw hand combs backward once with a shaking motion over mane.



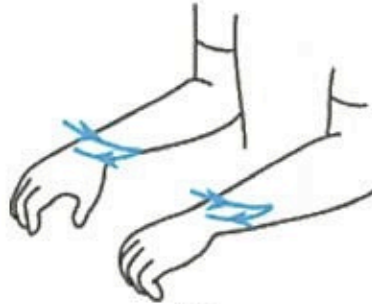
LION

Claw hand combs backward once with a shaking motion over mane.



WHAT

Index fingertip of right hand brushes down across left fingers.



DO

Palm-down C-hands move side-to-side left to right.



YOU

Index points at person addressed.



HEAR

H-hand rises to ear. (see SOUND)



I

Palm-left I-hand on chest.



HEAR

H-hand rises to ear. (see SOUND)



A

Palm-out A moves slightly right.

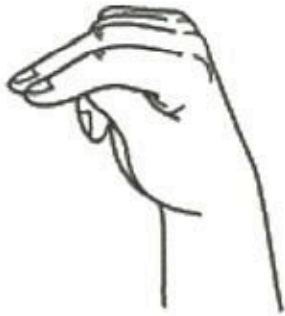


HIPPOPOTAMUS

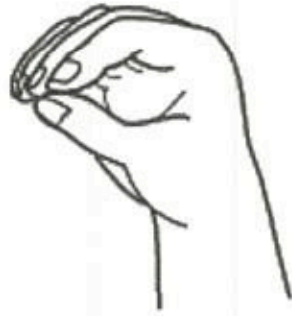
Y's, palms-together, right over left; open and close at wrists.



Ss
SNORTING



Nn



Oo



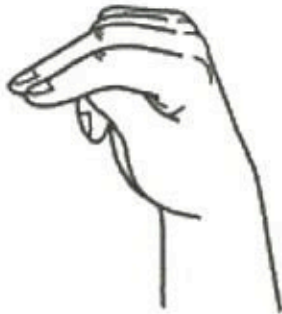
Rr



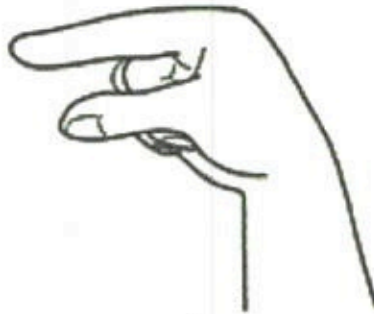
Tt



Ii



Nn



Gg



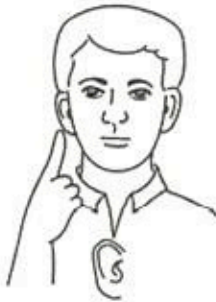
IN

Finger tips of right flat-O enter left horizontal O.



MY

Palm of flat hand on chest.



EAR

Right index points to ear.



HIPPOPOTAMUS

Y's, palms-together, right over left; open and close at wrists.



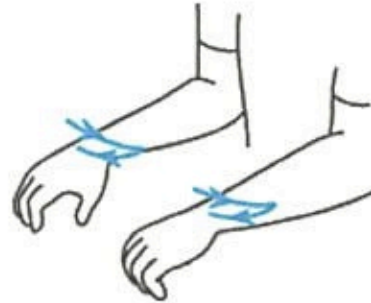
HIPPOPOTAMUS

Y's, palms-together, right over left; open and close at wrists.



WHAT

Index fingertip of right hand brushes down across left fingers.



DO

Palm-down C-hands move side-to-side left to right.



YOU

Index points at person addressed.



HEAR

H-hand rises to ear. (see SOUND)



I

Palm-left I-hand on chest.



HEAR

H-hand rises to ear. (see SOUND)



A

Palm-out A moves slightly right.



F1

FLAMINGO



STAND

V-finger tips stand on left palm.



FLUTE

FLUTING

Palm-in F's play flute, fluttering fingers.



-ING

Palm in, I-hand beats in slight downward arc to right, ending palm-out.



IN

Finger tips of right flat-O enter left horizontal O.



MY

Palm of flat hand on chest.



EAR

Right index points to ear.



F1

FLAMINGO



STAND

V-finger tips stand on left palm.



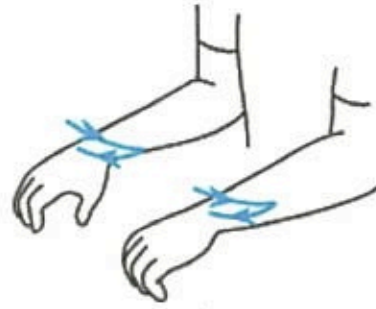
F I
FLAMINGO



STAND
V-finger tips stand on left palm.



WHAT
Index fingertip of right hand brushes down across left fingers.



DO
Palm-down C-hands move side-to-side left to right.



YOU
Index points at person addressed.



HEAR
H-hand rises to ear. (see SOUND)



I
Palm-left I-hand on chest.



HEAR
H-hand rises to ear. (see SOUND)



A
Palm-out A moves slightly right.



ZEBRA
Horizontal 4-hands mark stripes on body.



B b
BRAYING



R r



A a



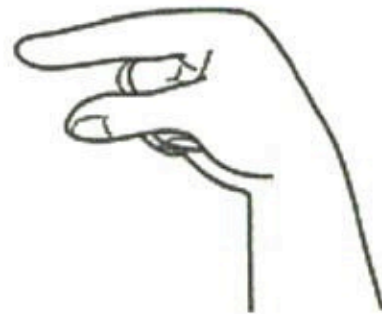
Y y



I i



N n



G g



IN

Fingertips of right flat O enter left horizontal O.



MY

Palm of flat hand on chest.



EAR

Right index points to ear.



ZEBRA

Horizontal 4-hands mark stripes on body.



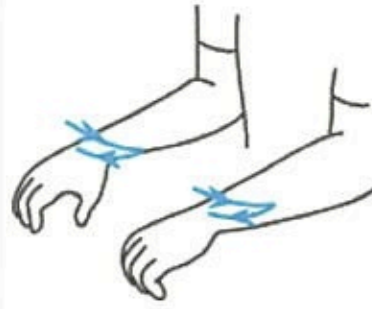
ZEBRA

Horizontal 4-hands mark stripes on body.



WHAT

Index fingertip of right hand brushes down across left fingers.



DO

Palm-down C-hands move side-to-side left to right.



YOU

Index points at person addressed.



HEAR

H-hand rises to ear. (see SOUND)



I

Palm-left I-hand on chest.



HEAR

H-hand rises to ear. (see SOUND)



A

Palm-out A moves slightly right.



B b

BOA



O o



A a



C c

CONSTRUCTOR



Oo



Nn



Ss



Tt



Rr



Hh



Cc



Tt



Oo



Rr



Hh

HISSING



SNAKE

Back of bent-V hand under chin circles forward. (see REPTILE)



IN

Fingertips of right flat-O enter left horizontal O.



MY

Palm of flat hand on chest.



EAR

Right index points to ear.



Bb

BOA



Oo



Aa

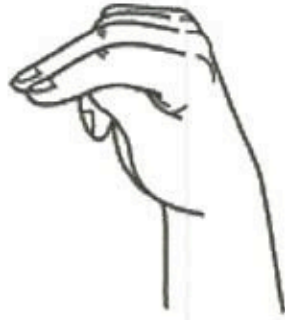


Cc

CONSTRUCTOR



Oo



Nn



Ss



Tt



Rr



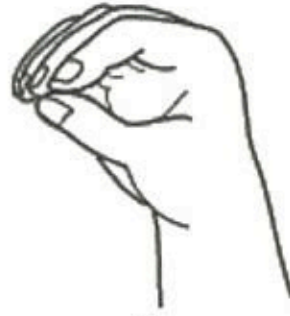
Ii



Cc



Tt



Oo



Rr



Bb

BOA



Oo



Aa

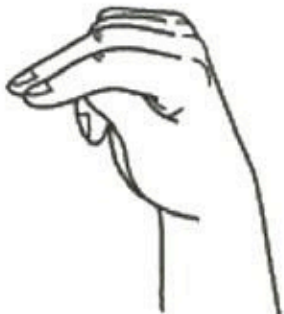


Cc

CONSTRUCTOR



Oo



Nn



Ss



Tt



Rr



Ii



Cc



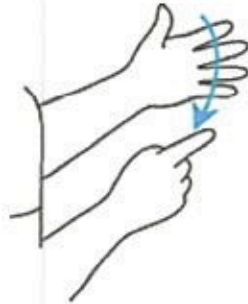
Tt



Oo

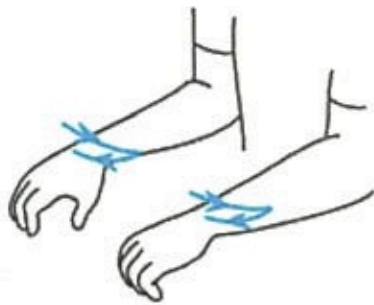


Rr



WHAT

Index fingertip of right hand brushes down across left fingers.



DO

Palm-down C-hands move side-to-side left to right.



YOU

Index points at person addressed.



HEAR

H-hand rises to ear. (see SOUND)



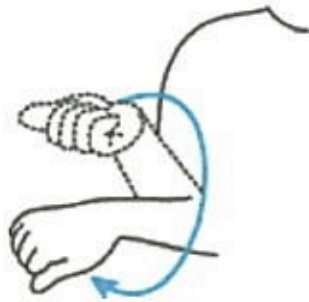
I

Palm-left I-hand on chest.



HEAR

H-hand rises to ear. (see SOUND)



AN

Palm-up A twists to palm-down.



ELEPHANT

From nose, trace elephant's trunk with open hand.



TRUMPET

TRUMPETING

Right fingers play outside left T at lips.



-ING

Palm-in, I-hand twists in slight downward arc to right, ending palm-out.



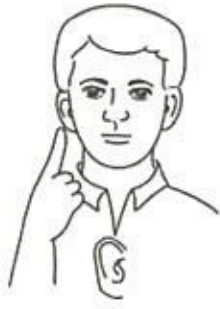
IN

Fingerrips of right flat-O enter left horizontal O.



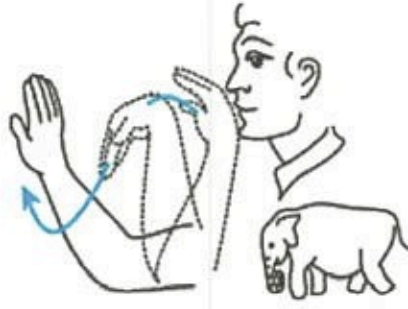
MY

Palm of flat hand on chest.



EAR

Right index points to ear.



ELEPHANT

From nose, trace elephant's trunk with open hand.



ELEPHANT

From nose, trace elephant's trunk with open hand.



WHAT

Index fingertip of right hand brushes down across left fingers.



DO

Palm-down C-hands move side-to-side left to right.



YOU

Index points at person addressed.



HEAR

H-hand rises to ear. (see SOUND)



I

Palm-left I-hand on chest.



HEAR

H-hand rises to ear. (see SOUND)



A

Palm-out A moves slightly right.

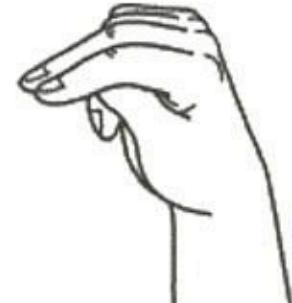


LEOPARD

Thumbs of L's on cheeks move to sides; repeat. (see CAT)



SNARLING



Nn



A a



R r



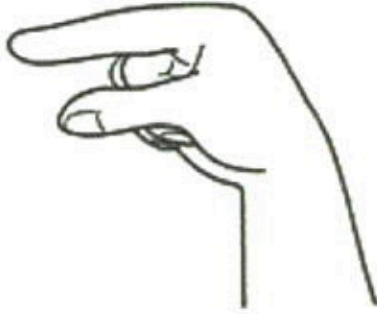
L l



I i



N n



G g



IN

Fingertps of right flat-O enter left horizontal O



MY

Palm of flat hand on chest.



EAR

Right index points to ear.



LEOPARD

Thumbs of L's on cheeks move to sides; repeat. (see CAT)



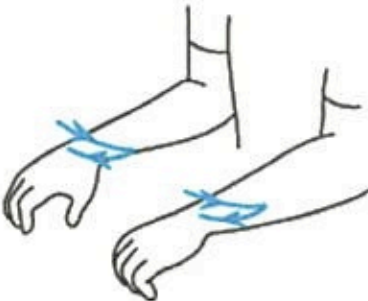
LEOPARD

Thumbs of L's on cheeks move to sides; repeat. (see CAT)



WHAT

Index fingertip of right hand brushes down across left fingers.



DO

Palm-down C-hands move side-to-side left to right.



YOU

Index points at person addressed.



HEAR

H-hand rise to ear. (see SOUND)



I

Palm-left I-hand on chest.



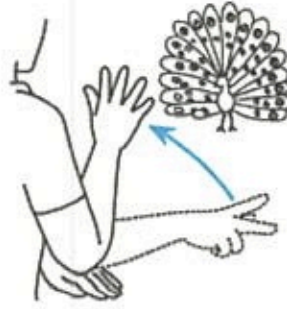
HEAR

H-hand rises to ear. (see SOUND)



A

Palm-out A moves slightly right.



PEACOCK

Right elbow on back of left hand, palm-down P rises and opens to 5. (like tail)



Yy

YELPING



Ee



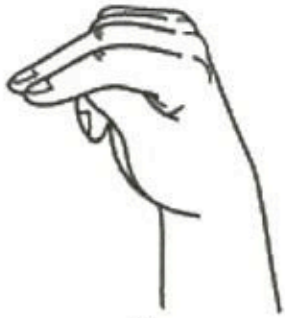
Ll



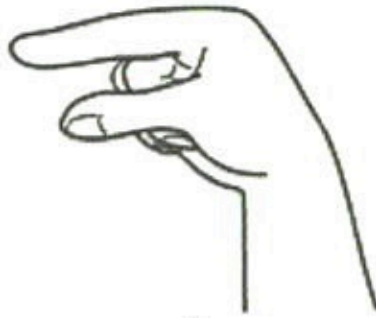
Pp



Ii



Nn



Gg



IN

Fingertips of right flat-O enter left horizontal O.



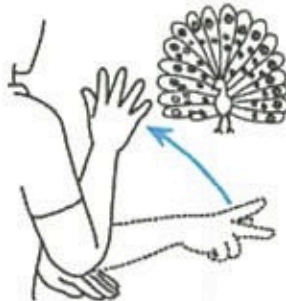
MY

Palm of flat hand on chest.



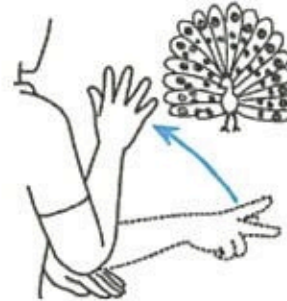
EAR

Right index points to ear.



PEACOCK

Right elbow on back of left hand, palm-down P rises and opens to 5. (like tail)



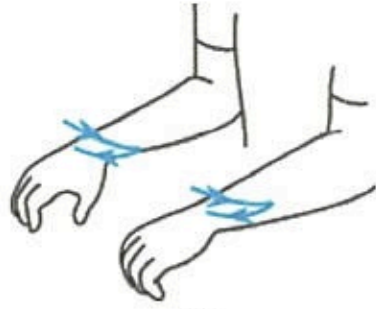
PEACOCK

Right elbow on back of left hand, palm-down P rises and opens to 5. (like tail)



WHAT

Index fingertip of right hand brushes down across left fingers.



DO

Palm-down C-hands move side-to-side left to right.



YOU

Index points at person addressed.



HEAR

H-hand rises to ear. (see SOUND)



I

Palm-left I-hand on chest.



HEAR

H-hand rises to ear. (see SOUND)



A

Palm-out A moves slightly right.



WALRUS

From mouth, both C's curve out and down to 5's. (forming tusks)



Bb

BELLOWIN



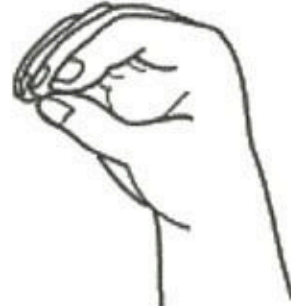
Ee



Ll



Ll



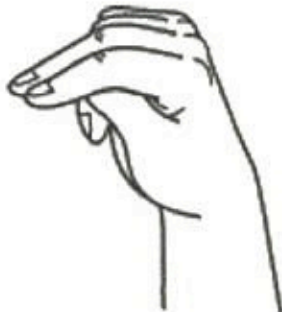
Oo



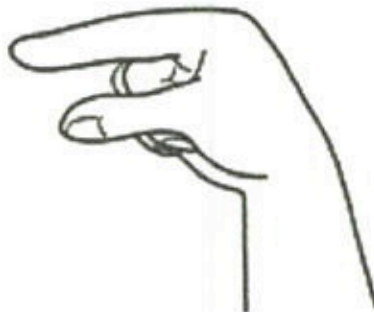
Ww



Ii



Nn



Gg



IN

Fingertips of right flat-O enter left horizontal O.



MY

Palm of flat hand on chest.



EAR

Right Index points to ear.



WALRUS

From mouth, both C's curve out and down to S's. (forming tusks)



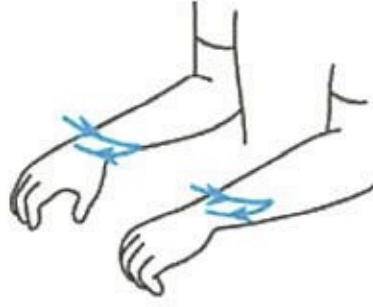
WALRUS

From mouth, both C's curve out and down to S's. (forming tusks)



WHAT

Index fingertip of right hand brushes down across left fingers.



DO

Palm-down C-hands move side-to-side left to right.



YOU

Index points at person addressed.



HEAR

H-hand rises to ear. (see SOUND)



I

Palm-left I-hand on chest.



HEAR

H-hand rises to ear. (see SOUND)

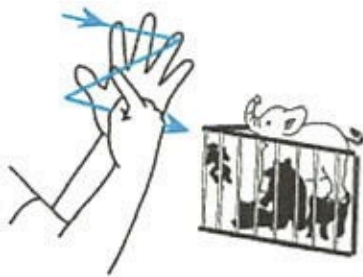


E e



A

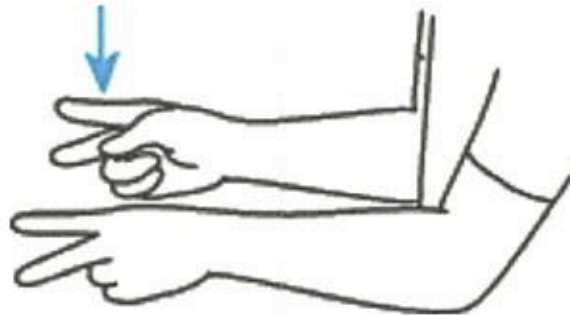
Palm-out A moves slightly right.



ZOO

ZOOKEEPER

Right index finger draws Z on palm of left 5-hand.



KEEP

Horizontal right K drops on left K.



-ER, -AR, -OR
Palm-out R.



WHISTLE

WHISTLING

Palm-in bent-V fingers near mouth.



-ING

Palm-in, I-hand twists in slight downward arc to right, ending palm-out.



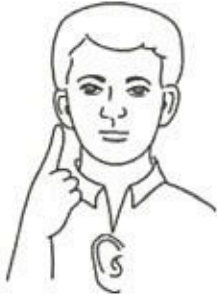
IN

Fingertips of right flat-O enter left horizontal O.



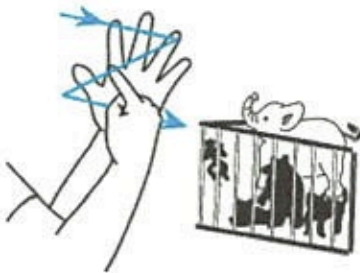
MY

Palm of flat hand on chest.



EAR

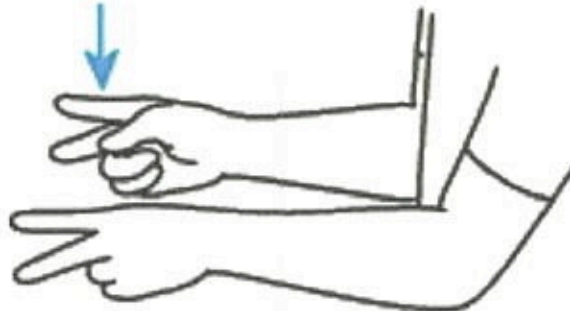
Right index points to ear.



ZOO

ZOOKEEPER

Right index finger draws Z on palm of left 5-hand.

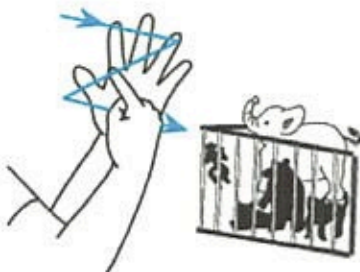


KEEP

Horizontal right K drops on left K.



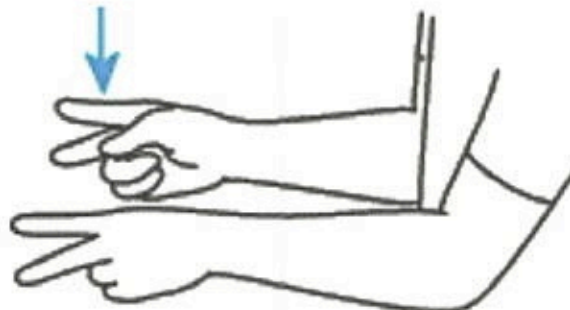
-ER, -AR, -OR
Palm-out R.



ZOO

ZOOKEEPER

Right index finger draws Z on palm of left 5-hand.



KEEP

Horizontal right K drops on left K.

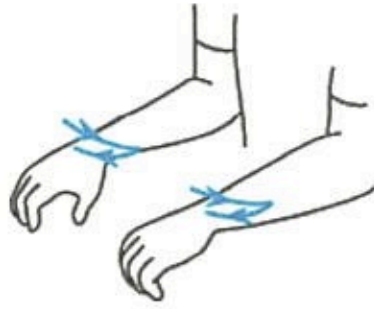


-ER, -AR, -OR
Palm-out R.



WHAT

Index fingertip of right hand brushes down across left fingers.



DO

Palm-down C-hands move side-to-side left to right.



YOU

Index points at person addressed.



HEAR

H-hand rises to ear. (see SOUND)



I

Palm-left I-hand on chest.



HEAR

H-hand rises to ear. (see SOUND)



CHILDREN

Palm-down hand bounces to side, waist high.



GROWL

GROWLING

Palm-in claw hand at throat shakes. (see GROAN)



-ING

Palm-in, I-hand twists in slight downward arc to right, ending palm-out.



LIKE

Palm-in L on chest moves forward, closing thumb and finger.



A

Palm-out A moves slightly right.



Pp
POLAR



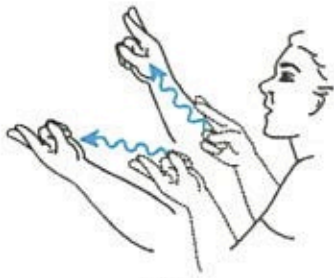
BEAR

Swing crossed wrists of palm-in claw hands to the right, still crossed.



BEAR

Swing crossed wrists of palm-in claw hands to the right, still crossed.



ROAR
ROARING

R's face each other, right above left at chin; move outward, separating vertically with wavy motion.



-ING

Palm-in, l-hand twists in slight downward arc to right, ending palm-out.



LIKE

Palm-in L on chest moves forward, closing thumb and finger.



A

Palm-out A moves slightly right.



LION

Claw hand combs backward once with a shaking motion over mane.



Ss

SNORTING



Nn



Oo



Rr



Tt



Ii



Nn



Gg



LIKE

Palm-in L on chest moves forward, closing thumb and finger.



A

Palm-out A moves slightly right.



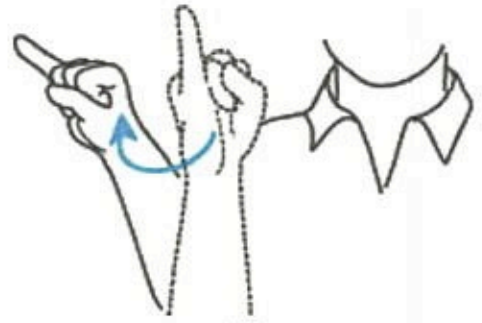
HIPPOPOTAMUS

Y's, palms-together, right over left; open and close at wrists.



**FLUTE
FLUTING**

Palm-in F's play flute, fluttering fingers.



-ING

Palm-in, 1-hand twists in slight downward arc to right, ending palm-out.



LIKE

Palm-in L on chest moves forward, closing thumb and finger.



A

Palm-out A moves slightly right.



Ff

FLAMINGO



STAND

V-fingertips stand on left palm.



Bb

BRAYING



Rr



Aa



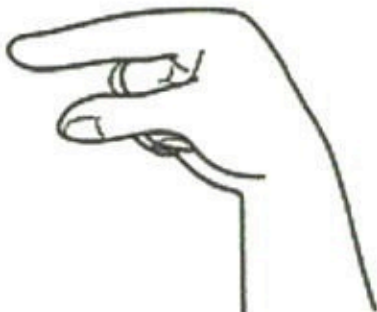
Yy



Ii



Nn



Gg



LIKE

Palm-in L on chest moves forward, closing thumb and finger.



A

Palm-out A moves slightly right.



ZEBRA

Horizontal 4-hands mark stripes on body.



Hh
HISSING



SNAKE
Back of bent-V hand under chin circles forward. (see REPTILE)



LIKE
Palm-to-L on chest moves forward, closing thumb and finger.



A
Palm-out A moves slightly right.



Bb
BOA



Oo

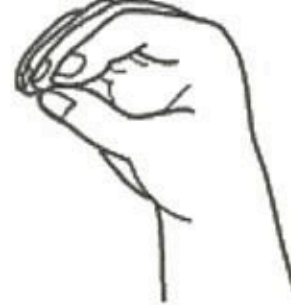


Aa

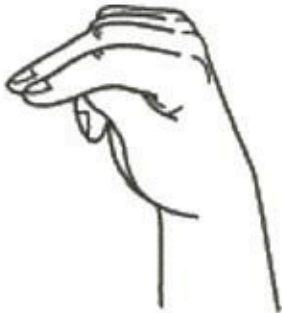


Cc

CONSTRUCTOR



Oo



Nn



Ss



Tt



Rr



Ii



Cc



Tt



Oo



Rr



TRUMPET

TRUMPETING

Right fingers play outside left T at lips.



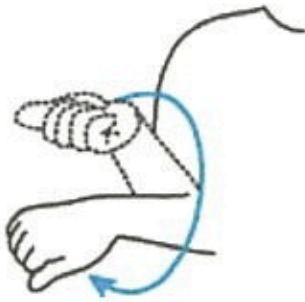
-ING

Palm-in, I-hand twists in slight downward arc to right, ending palm-out.



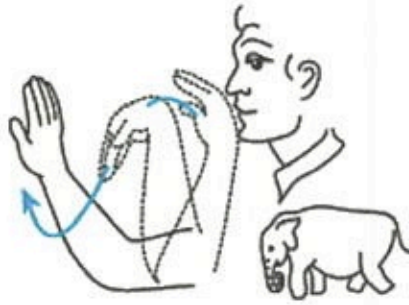
LIKE

Palm-in L on chest moves forward, closing thumb and finger.



AN

Palm-up A twists to palm-down.



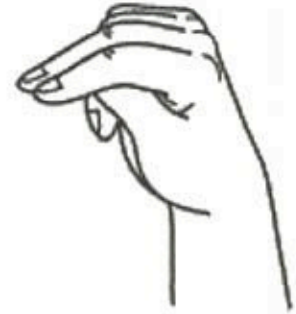
ELEPHANT

From nose, trace elephant's trunk with open hand.



Ss

SNARLING



Nn



Aa



Rr



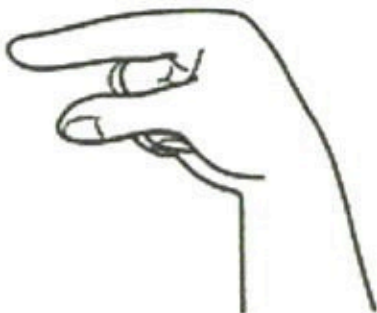
Ll



Ii



Nn



Gg



LIKE

Palm-in L on chest moves forward, closing thumb and finger.



A

Palm-out A moves slightly right.



LEOPARD

Thumbs of L's on cheeks move to sides; repeat. (see CAT)



Yy
YELPING



Ee



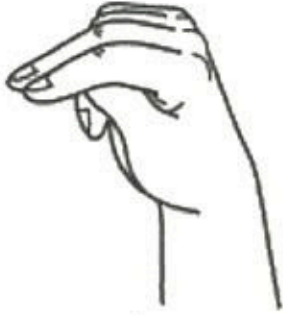
Ll



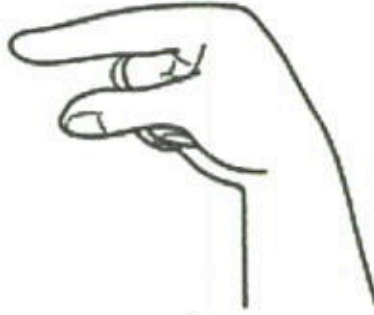
Pp



Ii



Nn



Gg



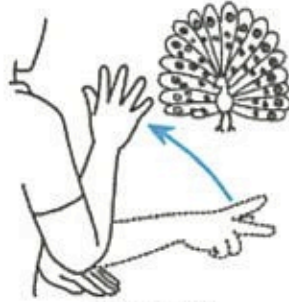
LIKE

Palm in L on chest moves forward, closing thumb and finger.



A

Palm-out A moves slightly right.



PEACOCK

Right elbow on back of left hand, palm-down P rises and opens to 5. (like tail)



Bb

BELLOWIN



Ee



Ll



Ll



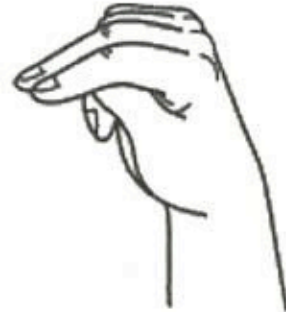
Oo



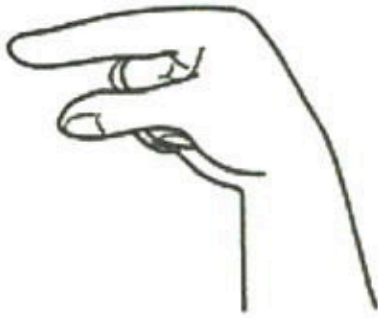
Ww



Ii



Nn



Gg



LIKE

Palm-in L on chest moves forward, closing thumb and finger.



A

Palm-out A moves slightly right.



WALRUS

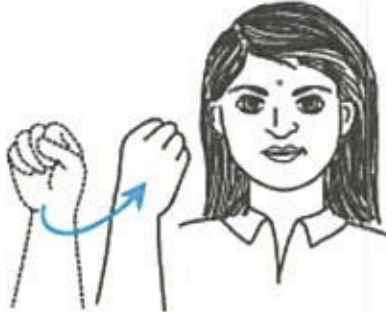
From mouth, both C's curve out and down to S's. (forming tusks)



THAT

THAT'S

Palm-down I-L hand on left palm. (index can point at object)



-S

Palm-out S twists inward.



WHAT

Index fingertip of right hand brushes down across left fingers.



I

Palm-left I-hand on chest.



HEAR

H-hand rises to ear. (see SOUND)